

### ERIS 10W

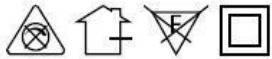
ERIS SURFACE ROUND

Indoor Luminaire

Product Code:

LERSBRGR10SC / LERSBRGR10SN / LERSBRGR10SW

10W - 850lm - 6500K - CRI>80 Ra - Beam Angle - 24°



### Technical Specifications

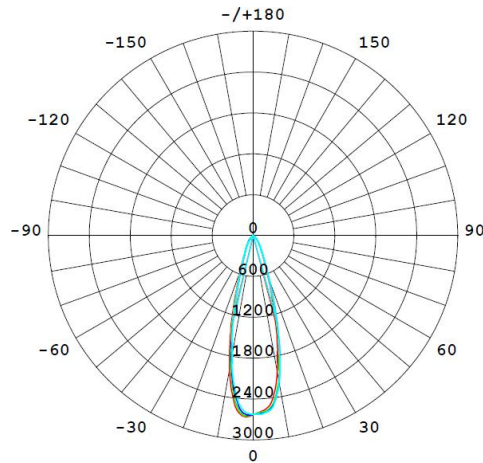
Operating Temperature	-10°C to 40°C
Rated Input Voltage & Frequency	220 ~ 240 VAC, 50Hz
Rated Input Wattage	10W ± 10%
Rated Input Current	0.046 Amp (Nominal)
Power Factor	≥0.90
THD	<15%
Rated Luminous Flux	850 lm / 800 lm / 750 lm (tolerance as per BIS)
Rated Luminaire Efficacy	85 lm/W / 80 lm/W / 75 lm/W (tolerance as per BIS)
Correlated Color Temperature (CCT)	6500 K / 4000 K / 3000 K (tolerance as per ANSI)
Color Rendering Index (CRI)	>80 Ra
Beam Angle	24° (within the permissible limits)
Driver Efficiency	≥80%
LED Life Span	>50000 Hrs (Ta=25°C @L70)
Housing	Die Cast Aluminium with Black Powder Coating
Lens / Reflector	PC Lens & Reflector
Mounting	Surface

### Protections

Over Voltage Protection	Withstand upto 440V/AC for 4 Hrs.
Surge Protection	±4.0KV
Protection Class	Class II
Ingress Protection (IP Rating)	IP20
Impact Protection (IK Rating)	IK02
Short Circuit Protection	Provided
Open Circuit Protection (No Load)	Provided
Reverse Polarity Protection	Provided

All technical data is subject to industry-standard tolerances.

## Light Distribution

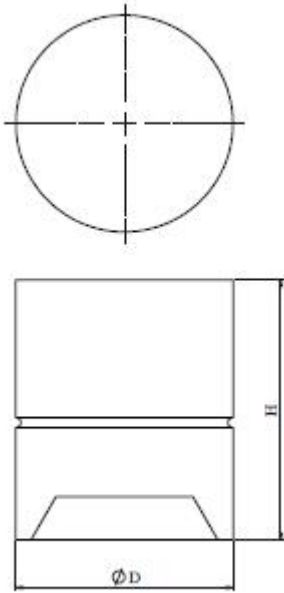


## UGR Table

ceiling/cavity	0.7	0.7	0.5	0.5	0.3	0.7	0.7	0.5	0.5	0.3
walls	0.5	0.3	0.5	0.3	0.3	0.5	0.3	0.5	0.3	0.3
working plane	0.2	0.2	0.2	0.2	0.2	0.2	0.2	0.2	0.2	0.2
Room dimensions	Viewed crosswise					Viewed endwise				
x = 2H y = 2H	17.5	18.3	17.7	18.5	18.6	17.7	18.4	17.9	18.6	18.8
3H	17.4	18.1	17.6	18.3	18.5	17.5	18.2	17.7	18.4	18.6
4H	17.3	18.0	17.5	18.2	18.4	17.4	18.1	17.7	18.3	18.5
6H	17.2	17.8	17.5	18.1	18.3	17.3	18.0	17.6	18.2	18.5
8H	17.1	17.8	17.4	18.0	18.3	17.3	17.9	17.6	18.2	18.4
12H	17.1	17.7	17.4	18.0	18.2	17.2	17.8	17.6	18.1	18.4
4H 2H	17.3	18.0	17.6	18.2	18.4	17.4	18.1	17.7	18.3	18.5
3H	17.1	17.7	17.4	18.0	18.2	17.3	17.9	17.6	18.1	18.4
4H	17.0	17.6	17.4	17.8	18.2	17.2	17.7	17.5	18.0	18.3
6H	16.9	17.4	17.3	17.7	18.1	17.1	17.5	17.4	17.9	18.2
8H	16.9	17.3	17.2	17.7	18.0	17.0	17.5	17.4	17.8	18.2
12H	16.8	17.2	17.2	17.6	18.0	17.0	17.4	17.4	17.7	18.1
8H 4H	16.9	17.3	17.2	17.7	18.0	17.0	17.5	17.4	17.8	18.2
6H	16.8	17.1	17.2	17.5	17.9	16.9	17.3	17.3	17.7	18.1
8H	16.7	17.0	17.1	17.4	17.9	16.8	17.2	17.3	17.6	18.0
12H	16.6	16.9	17.1	17.4	17.8	16.8	17.1	17.2	17.5	18.0
12H 4H	16.8	17.2	17.2	17.6	18.0	17.0	17.4	17.4	17.7	18.1
6H	16.7	17.0	17.1	17.4	17.9	16.8	17.2	17.3	17.6	18.0
8H	16.6	16.9	17.1	17.4	17.8	16.8	17.1	17.2	17.5	18.0
Variations with the observer position at spacings (CIE Pub.117) :										
S = 1.0H	+ 2.5 / -12.6					+ 2.5 / -12.5				
1.5H	+ 3.3 / - 9.2					+ 3.3 / - 9.2				
2.0H	+ 6.7 / -81.7					+ 6.8 / -45.6				

## Product Dimensions (Dia x H)

Ø72 X 90 mm (Tol. ± 5 mm)



## Applications

Residences, Offices, Small Retail Shops, Hotels, Coffee Shops, Restaurants, Hospitals, area lighting and for other indoor applications.